

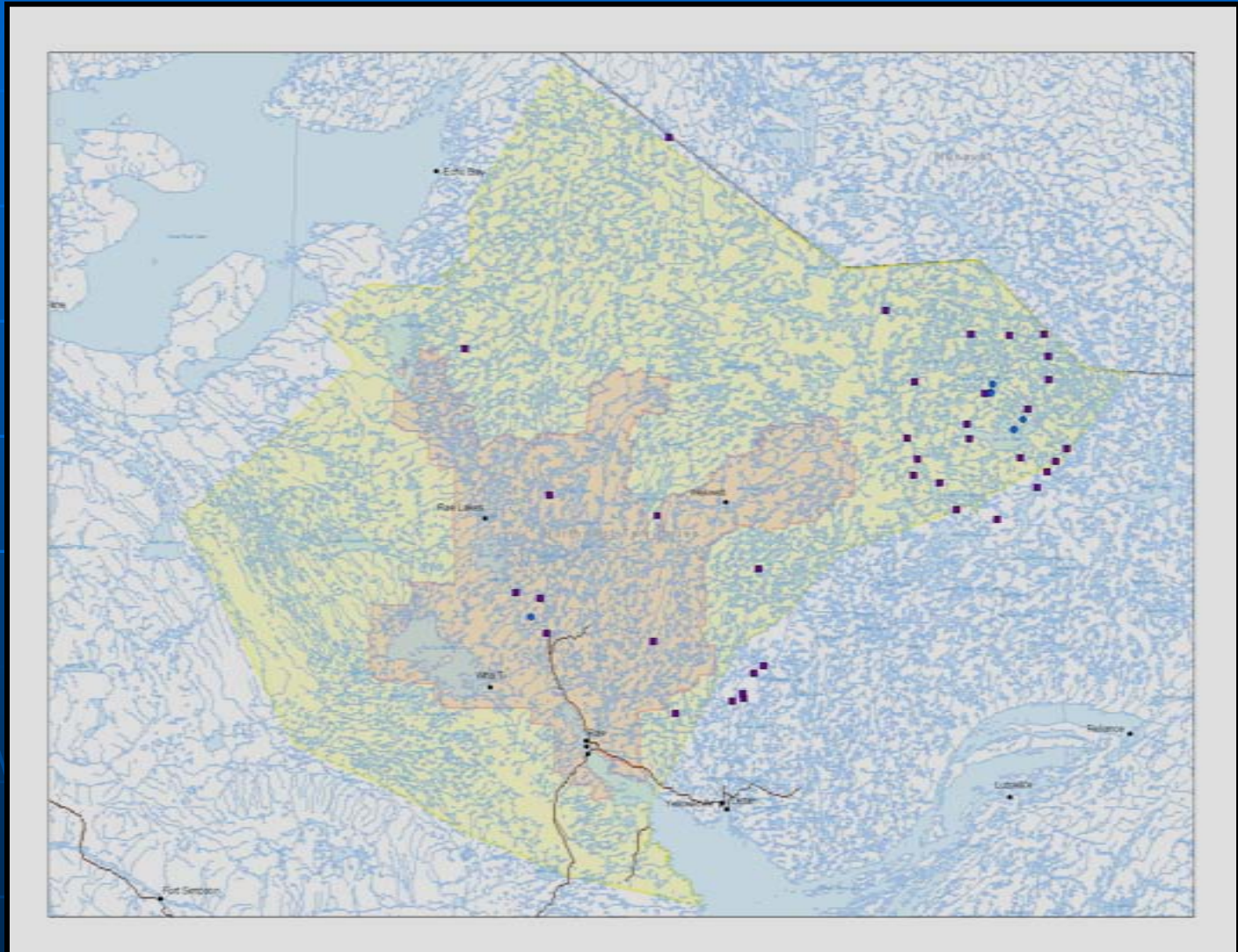
Mineral Exploration in Wek'èezhìi

Mineral Exploration in Wek'èezhìi

- 37 mineral exploration files, 25 different proponents
- Mostly land use permits
- Mostly private companies, some government mapping



Mineral Exploration in Wek'èezhìi



Mineral Exploration

- Goal: target an ore body for mining
- Activities include:
 - Sampling/Mapping
 - Geophysics Survey
 - Drill Program
 - Bulk Samples

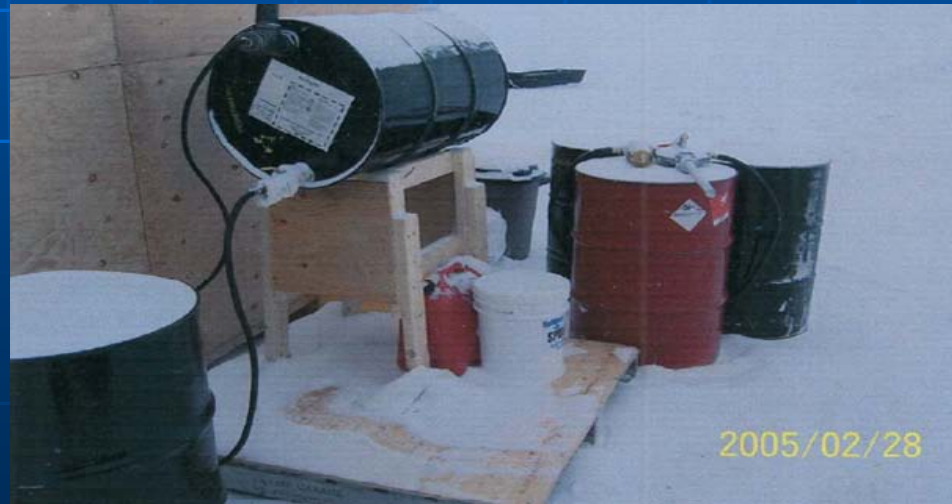


Triggers

- Camps, fuel, explosives, heavy equipment, and trails → LUP
- Water usage and waste deposition → WL



Fortune Minerals, Road



Peregrine Diamonds, Fuel

LUP Triggers

- Camps:
 - 200 person days or more
- Fuel:
 - cache larger than 4000 litres
- Trails:
 - wider than 10m



Water License Triggers

- Water Use: $> 100 \text{ m}^3$ of water is used
- Waste Disposal
- Major Stream Crossings or In-stream Works



Geological Mapping/Sampling

- Examine rocks and land features, collect samples for examination and analysis
- Low impact
- LUP required if camp or fuel storage triggers met



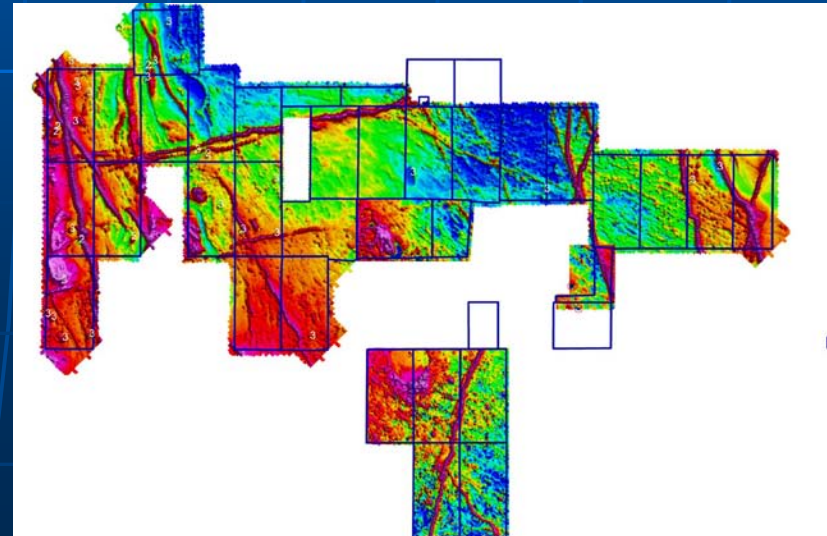


GEOLOGICAL SAMPLING



Geophysics Surveys

- Determine what is beneath the earth: magnetic, gravity, seismic, etc.
- LUP (camps, fuel cache, trails, line cutting, heavy equipment)
- WL if triggers are met



GEOFYSICS SURVEYS



DRILL PROGRAM

- Land Use Permit
- Water License



LUP Conditions (Example)

- Dispose of all combustible waste petroleum products by incineration or removal.
- Recirculating drill if close to high water mark.
- Notify inspector of drill locations prior to drilling
- Non-toxic drill waste to a sump
- Toxic drill waste off-site
- All drill waste removed from ice surface

Bulk Sampling

- Extract a large sample for analysis
- Determine quality and size of the ore body
- LUP & WL
 - Fortune Minerals' Nico Au-Co-Bi-Cu Project
 - Merc's Damoti Lake Gold Project



1 Tonne Sample Bags

Water License Conditions (Example)

- Effluent criteria
- Water sampling requirements
- Plans (A&R, Minewater, Contingency)

