



Technical Session - Town of Inuvik Water Licence Renewal (G17L3-001) April 27, 2017

Gerald Enns Hazardous Waste Management Specialist

Northwest Territories
Environment and
Natural Resources

Hazardous Waste & Community Governments

Overview

- ENR's Hazardous Waste Objectives
- Area's of improvement
- Developing a Hazardous Waste Management Plan



Hazardous Waste & Community Governments

- Protect the Environment = Prevent the release of contaminants
- Hazardous Wastes are one form of contaminants
- Track the movement of hazardous waste from registered;

Generators → **Carriers** → **Receivers**



Hazardous Waste & Community Governments

Two sources of hazardous waste:

I. Household hazardous waste (residential)



II. Industrial, Commercial, and Institutional (ICI) Sector



What is Hazardous Waste ?

Hazardous Waste can be REACTIVE, CORROSIVE, IGNITEABLE, OR TOXIC

- **Asbestos**
- **Batteries (Lead Acid)**
- **Glycols (Antifreeze, Heating Fluid)**
- **Heating Oil Tanks**
- **Household Hazardous Waste**
- **Hydrocarbon Contaminated Soil / Snow / Water**
- **Mercury Containing Materials**
- **Oil Debris**
- **Old Fuel**
- **Ozone Depleting Substances**
- **Paint**
- **Propane Tanks**
- **Residue fuel tanks/drums**
- **Used Oil**
- **Vehicles Containing Batteries, Fluids, Mercury Switches**



Hazardous Waste & Community Governments

“We will take care of our own hazardous waste but we’re not going to take everyone else’s.”

- **Define Acceptable and Unacceptable** Waste in your community
- **Keep Unacceptable Hazardous waste out** of your disposal facility
- **Communicate** with residents and the ICI Sector about Acceptable and Unacceptable



Town of Inuvik Hazardous Waste Management



Town of Inuvik Paint Management



Northwest Territories

Environment and
Natural Resources

How much is a litre of Used Oil?



1000 L

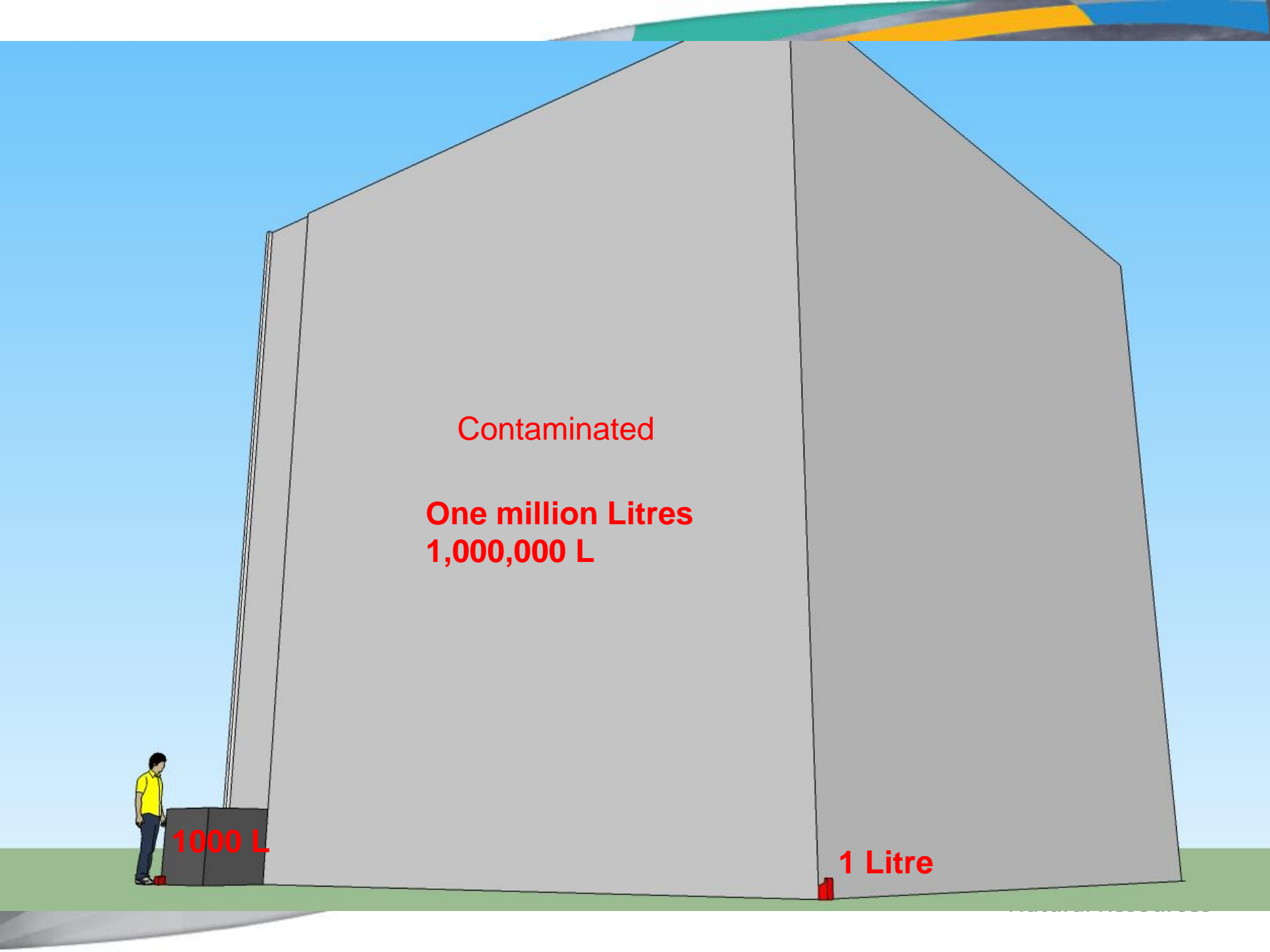
1 Litre



A large blue cube is shown against a light blue sky and green ground. A person in a yellow shirt and dark pants stands to the left of the cube, next to a smaller blue cube. The large cube is labeled 'One million Litres 1,000,000 L' in red text. The smaller cube is labeled '1000 L' in red text.

One million Litres
1,000,000 L

1000 L



Contaminated

One million Litres
1,000,000 L

1000 L

1 Litre

1 thermostat contains 3-5 grams Mercury

<http://epa.ohio.gov/LinkClick.aspx?fileticket=dL84chK7qko%3d&tabid=2654>

**Canadian Drinking Water Quality Guidelines for Mercury
= 0.001 mg/L**

**1 thermostat
Will contaminate
5 million litres
of drinking water.**

5 million Litres =
5000 m³ =
approx. 17m x 17m x 17m







The image shows a large, blue, rectangular prism standing on a green field under a blue sky. The prism is divided into four vertical sections. To the left of the prism, a small figure of a person and a small blue cube are visible, providing a sense of scale. The text 'Five million Litres' and '5,000,000 L' is written in red in the center of the prism.

Five million Litres
5,000,000 L



The image shows a large, grey, rectangular prism standing on a green field under a blue sky. The prism is divided into four vertical sections by thin black lines. To the left of the prism, a small human figure stands next to a small grey cube, providing a sense of scale. The text 'Five million Litres' and '5,000,000 L' is written in red in the center of the prism.

Five million Litres
5,000,000 L

ICI Hazardous Waste Stockpiles:



Northwest Territories

Environment and
Natural Resources

Storage is not a long term solution



Snow melts and drums fill up with water



Storage is not a long term solution

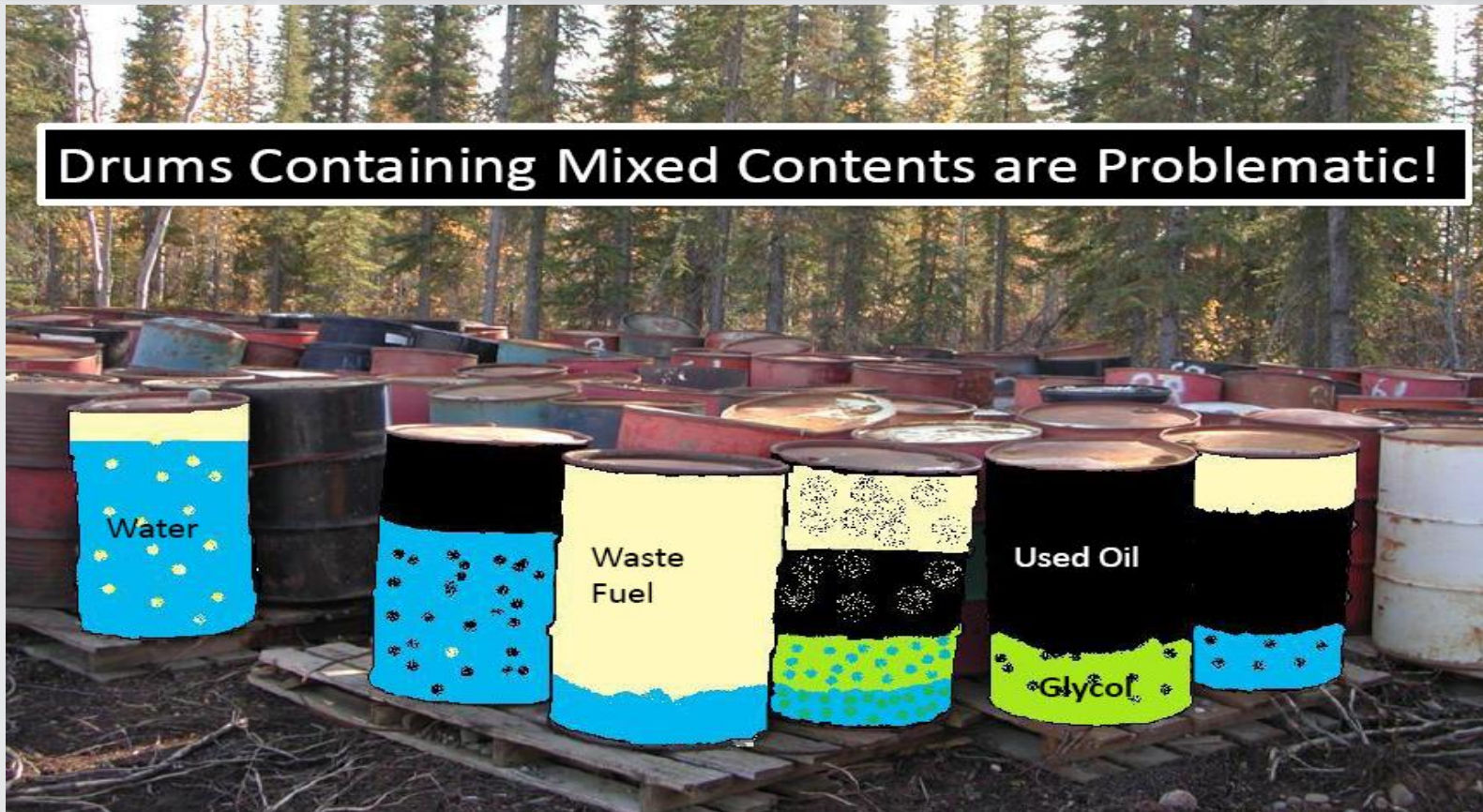


Drums that fill up with water leak and spill!



Storage is not a long term solution

Drums Containing Mixed Contents are Problematic!



Drums that fill up with water leak and spill!



Storage is not a long term solution



Keep Used Oil separate from
Water, **Glycol**, Solvents, and **Fuel**



Storage is not a long term solution



Ready for Transportation and
Disposal

Storage is not a long term solution



Ready for Transportation and Disposal



Storage is not a long term solution

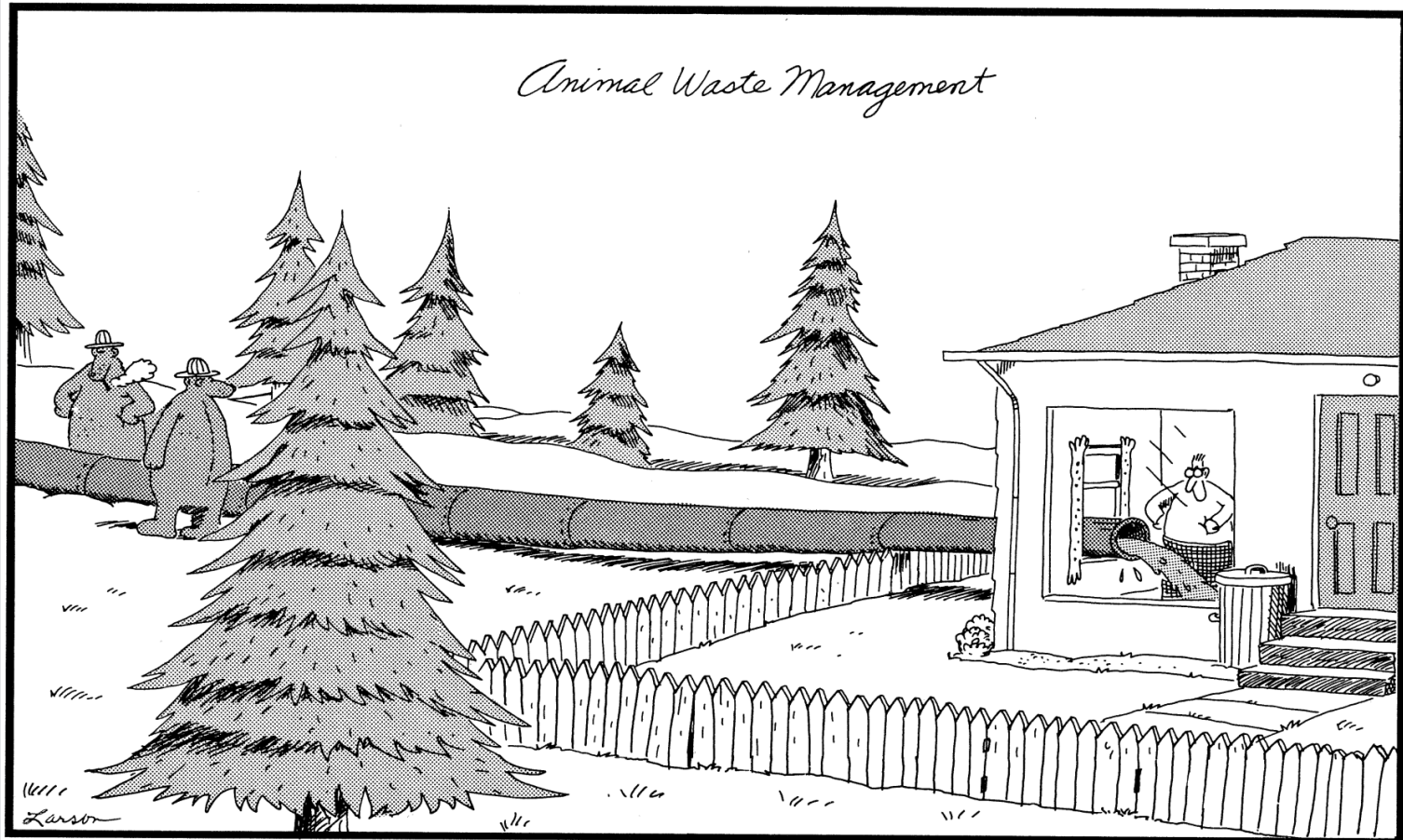


TYPE OF WASTE	CONTAINER	QUANTITY	SIZE
Used Oil	Drum	4	200 L
Glycol	Drum	3	200 L
Waste Fuel	Drum	2	200 L
Paint	Can	30	4 L
Batteries (vehicle)	Pallet	3	2000 kg
Propane Tanks	20 lb.	20	20 L
Aerosol cans	Drum	2	200 L

**Inventory used to arrange
Transportation and Disposal**



Thank you for your attention. Questions?





Northwest Territories

Environment and
Natural Resources