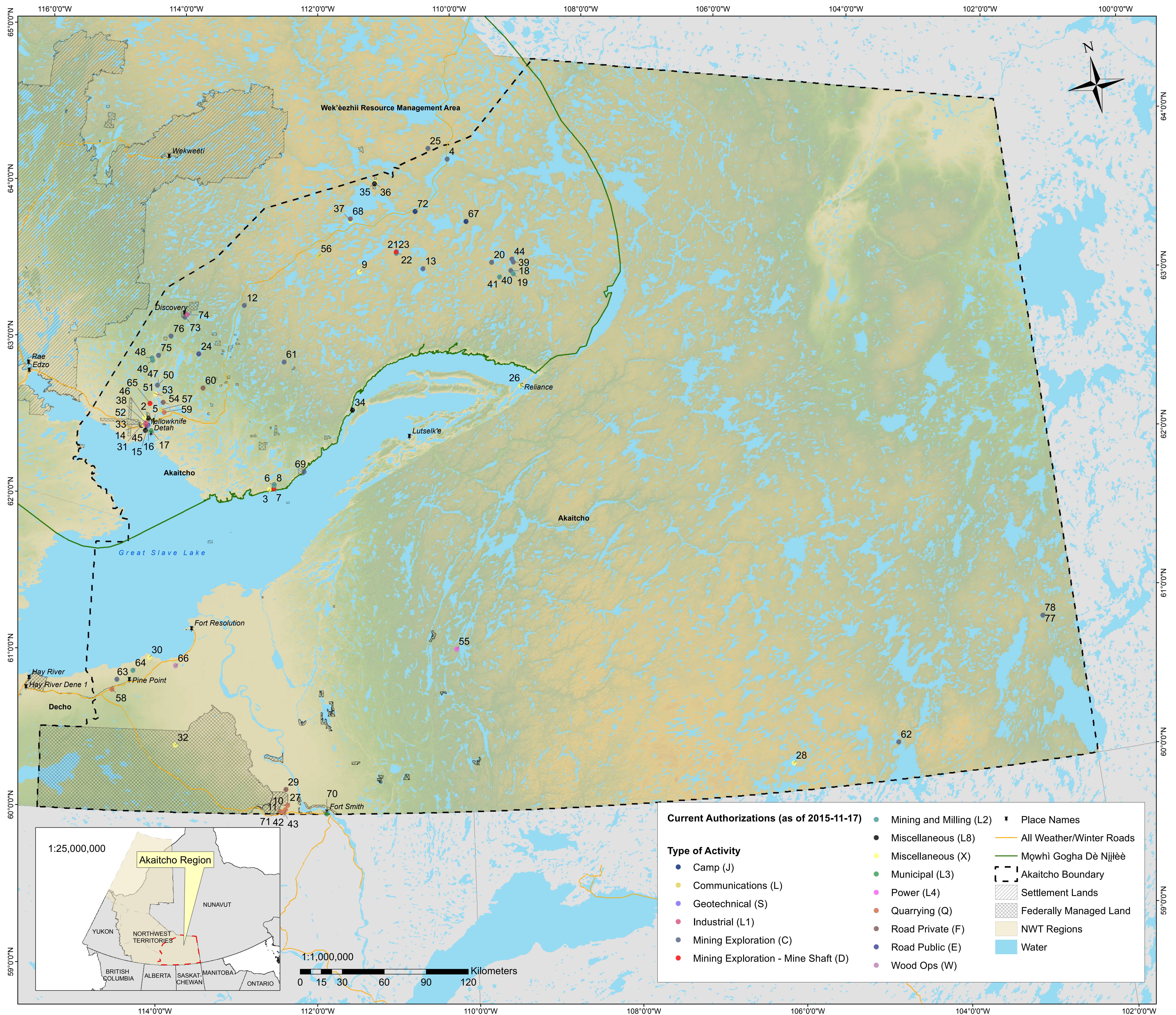


# Current Authorizations in the Akaitcho Region



**Current Authorizations (as of 2015-11-17)**

- Mining and Milling (L2)
- Miscellaneous (L8)
- Miscellaneous (X)
- Municipal (L3)
- Power (L4)
- Quarrying (Q)
- Road Private (F)
- Road Public (E)
- Wood Ops (W)
- Place Names
- All Weather/Winter Roads
- Mq̄whi Gogha Dè Nijjèè
- Akaitcho Boundary
- Settlement Lands
- Federally Managed Land
- NWT Regions
- Water

**Type of Activity**

- Camp (J)
- Communications (L)
- Geotechnical (S)
- Industrial (L1)
- Mining Exploration (C)
- Mining Exploration - Mine Shaft (D)

## Map Description:

This map demonstrates all the active Water Licences and Land Use Permits as of 2015-11-18 in the Akaitcho Region of the Northwest Territories. The unique ID on the map is associated with the table below, which displays information including file number, proponent name, type of activity and expiry date. For more information, visit [www.mvlwb.com](http://www.mvlwb.com).

This map is for illustrative purposes only. This is not a legal document, and should not be treated as such. The locations of files are approximated, hence their accuracy cannot be guaranteed.

Map Produced: 2015-11-18

## Map Information:

Coordinate System: NAD 1983 Northwest Territories Lambert  
 Projection: Lambert Conformal Conic  
 Datum: North American 1983  
 False Easting: 0.0000  
 False Northing: 0.0000  
 Central Meridian: -112.0000  
 Standard Parallel 1: 62.0000  
 Standard Parallel 2: 70.0000  
 Latitude Of Origin: 0.0000  
 Units: Meter

## Data Source:

Place Names, Boundaries, Roads, Water (NRC 2014-9-5); Mq̄whi Gogha Dè Nijjèè Boundary (AANDC 2002-7-11); Settlement Lands (NRC 2015-11-3); Federally Managed Lands (AANDC 2015-7)

This map is created by the Sahtu Land and Water Board for the Mackenzie Valley Land and Water Board. For regulatory related questions, please contact MVLWB. For questions regarding mapping information, please contact:

Jacqueline Ho  
 Regulatory Support Technician  
 Sahtu Land and Water Board  
 Jacqueline.ho@slwb.com  
 867-598-2413 (ext. 230)  
[www.slwb.com](http://www.slwb.com)

ID	File Number	Proponent	Activity	Expires	ID	File Number	Proponent	Activity	Expires
1	MV2012S0019	AANDC - CARD	Geotechnical (S)	2017-09-12	40	MV2013C0023	Kennedy Diamonds	Mining Exploration (C)	2019-02-26
2	MV2012L8-0010	AANDC - CARD	Miscellaneous (L8)	2016-03-27	41	MV2013L2-0005	Kennedy Diamonds	Mining and Milling (L2)	2021-02-26
3	MV2014X0002	AANDC - CARD	Miscellaneous (X)	2019-04-01	42	MV2012Q0020	Kenneth Hudson	Quarrying (Q)	2018-08-07
4	MV2008C0029	ATW Resources Ltd.	Mining Exploration (C)	2016-01-21	43	MV2012Q0003	Locust Mowing	Quarrying (Q)	2017-03-15
5	MV2013X0003	Aurora College - Yellowknife Campus	Miscellaneous (X)	2018-05-14	44	MV2015C0004	Margaret Lake Diamonds Inc.	Mining Exploration (C)	2020-05-06
6	MV2011C0006	Avaton Rare Metals Inc.	Mining Exploration (C)	2016-07-04	45	MV2007L8-0025	Miramir Northern Mining Ltd.	Miscellaneous (L8)	2018-11-30
7	MV2014D0001	Avaton Rare Metals Inc.	Mining Exploration - Mine Shaft (D)	2019-04-23	46	MV2008X0030	National Defense Headquarters CLS/DLE	Miscellaneous (X)	2016-01-07
8	MV2014L2-0001	Avaton Rare Metals Inc.	Mining and Milling (L2)	2019-05-21	47	MV2014C0021	New Discovery Mines Ltd.	Mining Exploration (C)	2019-07-02
9	MV2009J0029	Bathurst Inlet Development Ltd.	Miscellaneous (X)	2017-04-28	48	MV2014L2-0002	New Discovery Mines Ltd.	Mining and Milling (L2)	2021-07-02
10	MV2009Q0003	Berton Construction & Rentals	Quarrying (Q)	2018-03-25	49	MV2015L2-0004	New Discovery Mines Ltd.	Mining and Milling (L2)	2022-10-20
11	MV2013C0009	Borderline Contracting Ltd C-A 6291 NWT Ltd	Quarrying (Q)	2018-09-18	50	MV2015C0015	New Discovery Mines Ltd.	Mining Exploration (C)	2020-10-20
12	MV2012C0006	Boxer Gold Corp.	Mining Exploration (C)	2017-04-24	51	MV2005L4-0008	Northwest Territories Power Corp.	Power (L4)	2021-04-02
13	MV2015C0013	Canterra Minerals Corporation	Mining Exploration (C)	2020-08-26	52	N1L1-1632	Northwest Territories Power Corp.	Industrial (L1)	2019-12-31
14	MV2009L3-0007	City of Yellowknife	Municipal (L3)	2022-05-30	53	MV2009X0040	Northwest Territories Power Corp.	Miscellaneous (X)	2016-03-30
15	MV2015L8-0002	City of Yellowknife	Miscellaneous (L8)	2017-06-03	54	MV2010F0045	Northwest Territories Power Corp.	Road Private (F)	2015-12-21
16	MV2015S0017	City of Yellowknife	Geotechnical (S)	2020-10-07	55	MV2011L4-0002	Northwest Territories Power Corp.	Power (L4)	2021-08-30
17	MV2009L3-0028	Community of Detah	Municipal (L3)	2020-03-03	56	MV2013L0015	NorthwestTel Inc.	Communications (L)	2018-10-09
18	MV2005C0032	De Beers Canada Inc. - Gahcho Kue	Mining Exploration (C)	2019-08-10	57	MV2014L0023	NorthwestTel Inc.	Communications (L)	2019-11-05
19	MV2005L2-0015	De Beers Canada Inc. - Gahcho Kue	Mining and Milling (L2)	2028-09-30	58	MV2014Q0019	Rowles Construction	Quarrying (Q)	2019-05-15
20	MV2008C0022	De Beers Canada Inc. - Gahcho Kue	Mining Exploration (C)	2018-04-22	59	MV2014Q0024	RTL - Robinson Enterprises Ltd.	Quarrying (Q)	2019-11-05
21	MV2010C0053	De Beers Canada Inc. - Snap Lake	Mining Exploration (C)	2016-02-15	60	MV2014F0028	RTL - Robinson Enterprises Ltd.	Road Private (F)	2018-12-10
22	MV2011L2-0004	De Beers Canada Inc. - Snap Lake	Mining and Milling (L2)	2020-08-13	61	MV2008C0008	Silver Bear Mines Inc.	Mining Exploration (C)	2016-07-29
23	MV2014D0010	De Beers Canada Inc. - Snap Lake	Mining Exploration - Mine Shaft (D)	2016-02-15	62	MV2011C0024	Strongbow Exploration Inc.	Mining Exploration (C)	2016-12-06
24	MV2012F0004	Deton Cho Corporation	Road Public (E)	2017-03-28	63	MV2008C0023	Tamerlane Ventures Inc.	Mining Exploration (C)	2016-07-01
25	MV2012C0009	Dominion Diamond Holdings Ltd.	Mining Exploration (C)	2018-03-06	64	MV2006L2-0013	Teck Cominco	Mining and Milling (L2)	2017-10-28
26	MV2015X0009	Environment Canada	Miscellaneous (X)	2016-07-15	65	MV2014C0005	TerraX Minerals Inc.	Mining Exploration - Mine Shaft (D)	2019-03-06
27	MV2010Q0056	Fort Smith Construction NT Ltd.	Quarrying (Q)	2016-02-15	66	MV2015W0011	Timberworks Inc.	Wood Ops (W)	2020-08-12
28	MV2015X0006	Geological Survey of Canada	Miscellaneous (X)	2018-06-17	67	MV2011J0019	Tii Cho Landtran Transport Ltd.	Camp (J)	2016-12-06
29	MV2009F0008	GNWT-Aurora College	Road Private (F)	2016-07-15	68	MV2014F0007	Tii Cho Landtran Transport Ltd.	Road Private (F)	2019-03-19
30	MV2010X0009	GNWT-DOT	Miscellaneous (X)	2017-05-28	69	MV2010C0015	TNR Gold Corp.	Mining Exploration (C)	2016-03-02
31	MV2015L8-0008	GNWT-DOT - Airport Division	Miscellaneous (L8)	2040-10-07	70	MV2011L3-0001	Tyhee Development NWT Corp.	Mining Exploration (C)	2018-10-30
32	MV2010X0011	GNWT-DOT - Highway Division YK	Miscellaneous (X)	2017-06-10	71	MV2009Q0010	Trappers Trucking Ltd.	Quarrying (Q)	2016-06-16
33	MV2015X0008	GNWT-PWS	Miscellaneous (X)	2020-07-15	72	MV2013J0006	True North Safaris Ltd.	Camp (J)	2018-09-23
34	MV2012L8-0003	Great Slave Lake Lodge	Miscellaneous (L8)	2017-06-06	73	MV2011C0021	Tyhee Development NWT Corp.	Mining Exploration (C)	2016-11-23
35	MV2009X0019	INAC-CARD (Contaminants and Remediation Directorate)	Miscellaneous (X)	2016-12-16	74	MV2013L2-0001	Tyhee Development NWT Corp.	Industrial (L1)	2018-10-30
36	MV2009L8-0008	INAC-CARD (Contaminants and Remediation Directorate)	Miscellaneous (L8)	2016-12-16	75	MV2014C0003	Tyhee Development NWT Corp.	Mining Exploration (C)	2019-02-26
37	MV2009X0047	Joint Ventures Management Committee	Miscellaneous (X)	2017-04-29	76	MV2014C0004	Tyhee Development NWT Corp.	Mining Exploration (C)	2019-02-26
38	MV2014L1-0005	KBL Environmental Ltd.	Industrial (L1)	2019-06-04	77	MV2009C0001	WML Exploration BC Ltd.	Mining Exploration (C)	2016-05-26
39	MV2012C0010	Kennedy Diamonds	Mining Exploration (C)	2017-06-06	78	MV2009C0001	WML Exploration BC Ltd.	Mining Exploration (C)	2016-05-26